

## Why Seralam Greenhouse?



### THE ADVANTAGES OF A SERALAM GREENHOUSE;

Thanks to its film coated or gelcoated surface:

- The agricultural productivity in Seralam greenhouses is superior to other greenhouses that are constructed using other products.
- Seralam creates minimal amount of shading with a high translucency factor of 95%.
- Seralam's low thermal conductivity minimizes energy costs compared to substitutes.
- The UV additive in its make, blocks the harmful arrays of UV.
- Seralam is highly durable at a very wide range of operating temperatures (-40°C - +130°C).
- Seralam glazings are very durable against corrosive agents.
- Seralam glazings are hygienic and do not let growth of microorganisms.
- Seralam glazings do not emit toxic materials throughout their operating life.
- Seralam glazings are easily cleaned, they do not rust or corrode.
- They can be used nearby power transmission lines due to their low electrical conductivity.
- Seralam greenhouses have longer life span compared to nylon covered greenhouses.
- Seralam greenhouses require a lower cost steel frame/structure.
- Seralam greenhouses are resilient against hail attacks.
- If necessary, the supporting frame can also be made out of FRP profiles making the whole greenhouse made out of FRP products.
- Since Seralam glazings are anti-corrosive, they do not create rust or stain. As a result the harvest does not get contaminated.
- Seralam greenhouses are more durable against wind load compared to other greenhouses.

### TECHNICAL PROPERTIES:

- Standard Colors : Natural (clear), yellow, orange, green, blue
- Surface Options : Standard surface, UV resistant film coated, UV resistant gelcoated, smooth or cracked-ice patterned
- Standard Thickness : 0.9 - 1.2 mm (Maximum 4.0 mm)
- Standard Lengths : According to the requirements of the project (Maximum of 13.0 meters)
- Density : 1.30 - 1.40 gr/cm<sup>3</sup>
- Translucency : % 90 - % 95
- Operating Temperature : -40°C - +130°C
- Tensile Strength : 720 kg/cm<sup>2</sup>
- Compressive Strength : 920 kg/cm<sup>2</sup>
- Elongation : 2.7 x 10-50 C-1
- Water Absorption : % 0.2
- Surface Hardness : > 40 Barcol
- Ignition Temperature : 487°C
- Thermal Conductivity : ~ 5 W/m<sup>2</sup>\*K

### CHEMICAL AND CORROSION RESISTANCE

CHEMICAL	CONCENTRATION*
Acetic Acid	5 %
Chloric Acid	10 %
Nitric Acid	10 %
Sulphuric Acid	30 %
Ethyl Alcohol	95 %
Benzyl	30 %
Toluol	30 %
Carbon Sulphur	30 %



### Certifications



Turkish Standarts Institute  
Quality Certificate  
TS-EN 1013-2



Fire Resistance Certification  
No RA01-153 : M 2



Fire Resistance Certification  
E - 84 FS-C25



Impact Resistance Certification  
ACR(M) 001-200 Class B



Fire Resistance Certification  
BS 476-7 Class 3 SAB3  
Class 1 SAA



Fire Resistance Certification  
DIN 4102:B2



FRP GREENHOUSE GLAZING

www.polser.com

CINAR GROUP

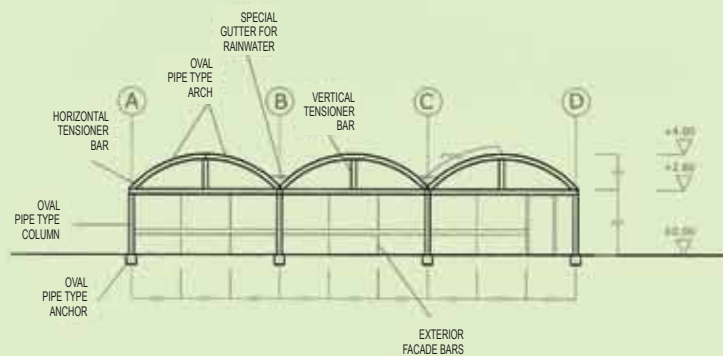
POLSER IS A COMPANY OF CINAR GROUP



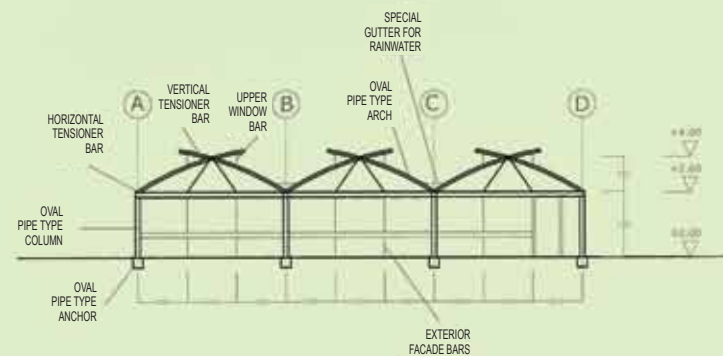
10006 Sokak No: 56 Atatürk Organize Sanayi Bölgesi Cigli / IZMIR - TURKIYE 35620  
Tel: +90.232. 376 88 22 (pbx) Fax: +90.232. 376 70 58  
www.polser.com - e-mail: info@polser.com

SERALAM

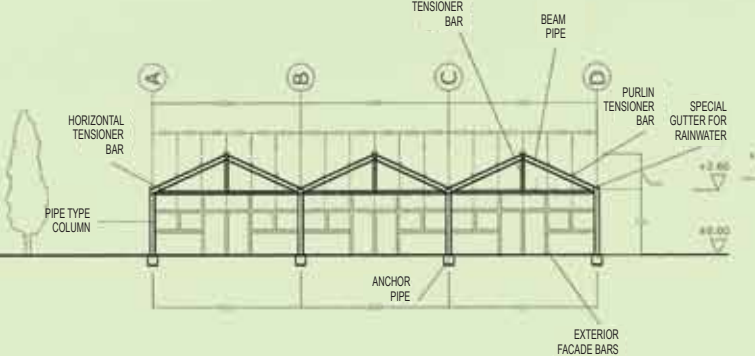
### ARCH ROOF TYPE GREENHOUSE



### GABLE/SADDLE ROOF TYPE GREENHOUSE



### GOthic ROOF TYPE GREENHOUSE



## SERALAM FRP GREENHOUSE GLAZING



The brand name "SERALAM" stands for the high quality, translucent, FRP (Fiberglass Reinforced Polyester) trapezoidal, corrugated or flat glazings that are produced by Polser FRP Panels, Inc. in its continuous lamination line that has an annual capacity of 7,000,000 sq. mt. These products that are produced in Polser's modern production lines in its 8,000 sq. mt. facility in Izmir Atatürk Industrial Zone reach Polser's customers all throughout the world as well as in Turkey.

The quality of Polser's products have been confirmed by its numerous domestic and foreign customers as well as TS-EN 1013-2 Quality Certificate.

Thanks to its continuous research and development activities, numerous patents, the technical staff that follows the recent technological advancements in the composites field, Polser tries to offer its clients the highest quality products that meet their requirements.

Polser sales team is not focused on solely closing a sales but rather tries to maximize its customers' satisfaction by providing them the technical support from the step of product selection to the step of post-application problem solving.

The Seralam glazings combine durability and economy both for the existing greenhouse projects and the new ones.

If requested, Seralam glazing can be produced with an extra protective layer on the top and on the bottom or with acrylic resin within the body to increase its durability against the UV and chemical corrosives.

Seralam glazing can not only be used as the sole cladding and roofing product in a project but also in combination with fibercement, galvanized steel, and PU sandwich metal roofing panels.



www.polser.com